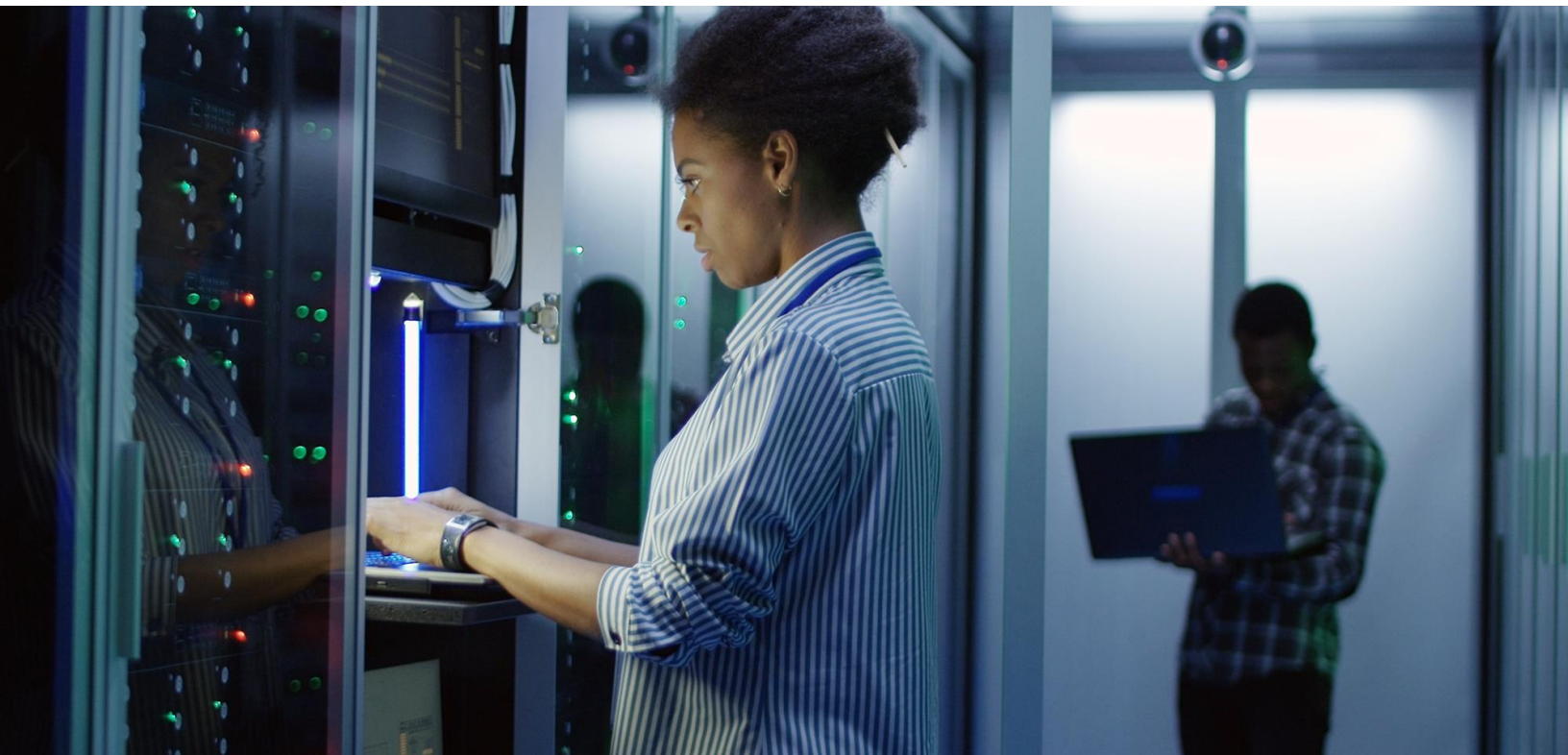


Universal Device Manager

Enabling data flow between UKG Pro Workforce Management devices and applications.

At UKG, it is imperative that the deployment and integration of UKG devices and integrations is flawless in execution. UKG Pro® Universal Device Manager is the device management system of our newest platform. UDM is a world-class device management and monitoring system that manages your UKG devices from one centralized dashboard. With UDM, we've taken the core concepts from our previous device management offerings and combined them with innovations that offer your users the freedom and access to manage their work in the ways they need.



Comprehensive Access

With UDM, enjoy efficient deployments, enhanced monitoring, and direct access to device settings embedded throughout the application to give your people the information they want, where they want it.



A Connected Experience

Fully scalable, adapter-based platform technology built into UDM allows for quick reaction to acquisitions or third-party device integrations.



Timely Compliance Updates

Manage your UKG devices to support real-time Attestations to ensure your clock users are in compliance; being asked the right questions at the right times.

Key benefits

For IT professionals

Highly integrated with all UKG Pro Workforce Management applications and workforce management services such as Timekeeping & Attestation

Contain labor costs by restricting punches to employee schedules

The device management dashboard enables users to customize columns and take several actions from one place instead of opening multiple screens

Enjoy fast deployment with enhanced monitoring and management

Visualized soft keys on the dashboard eliminate guesswork as to where each key will appear and how the clock layout will look

Manage All Your Data In One Place

- Establish connections to InTouch and InTouch DX devices
- Configure and test data collection devices
- Initialize and update device configuration and application data to devices
- Collect punches from devices
- View device status, messages, transaction records, and device and error logs
- Set up Smart View transactions that can be used at devices
- Easily find devices that need attention using filters for device status, groups, or tags
- Create custom dashboard views within the application and export grids as a .CSV file to see important information such as: Device Type, Biometric Sensor, Firmware Version, IP Address, Last Communication
- Schedule Events using highly customizable schedules for individual devices or device groups

Find the Right Solutions to Problems More Quickly

- Drill into device details to see activity history, what employees are assigned to the device, perform troubleshooting tasks
- Be notified by email alerts for device communication changes
- Take actions across multiple device groups at one time
- Use the device configuration grid to find, view, understand
- usage of a particular setting by filtering across all device
- Create your own reports and email dashboard views to be sent directly to executives on a scheduled basis
- Use tags as a way to quickly mark and find devices that require an update



Connect with us online@UKG.com

© 2021, 2023 UKG Inc. All rights reserved. For a full list of UKG trademarks, please visit ukg.com/trademarks. All other trademarks, if any, are property of their respective owners. All specifications are subject to change. CV0769-USv3